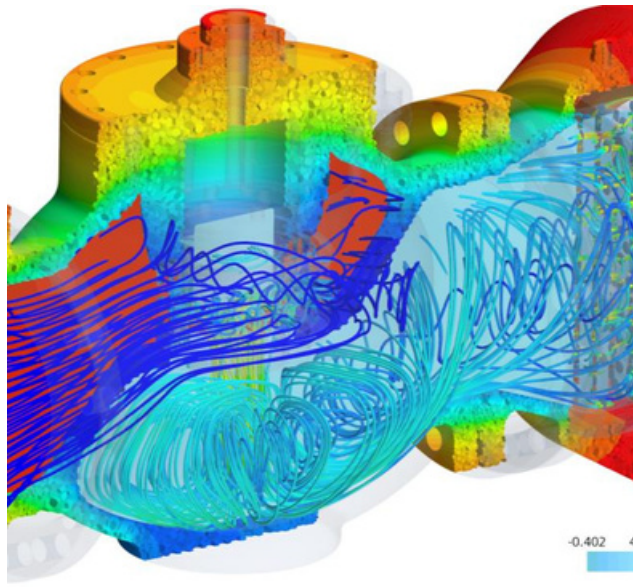
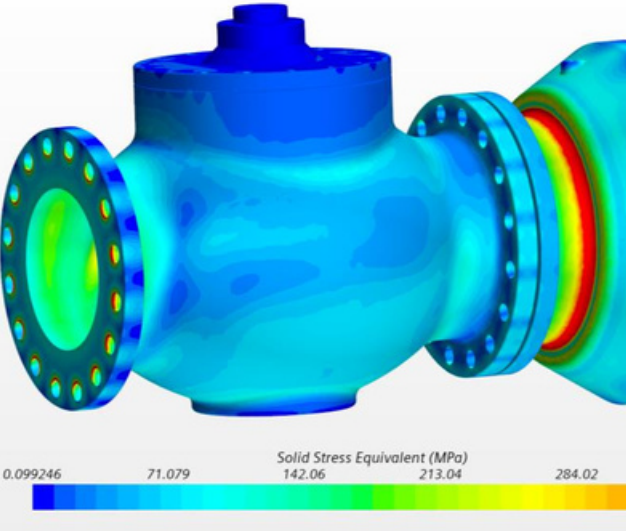
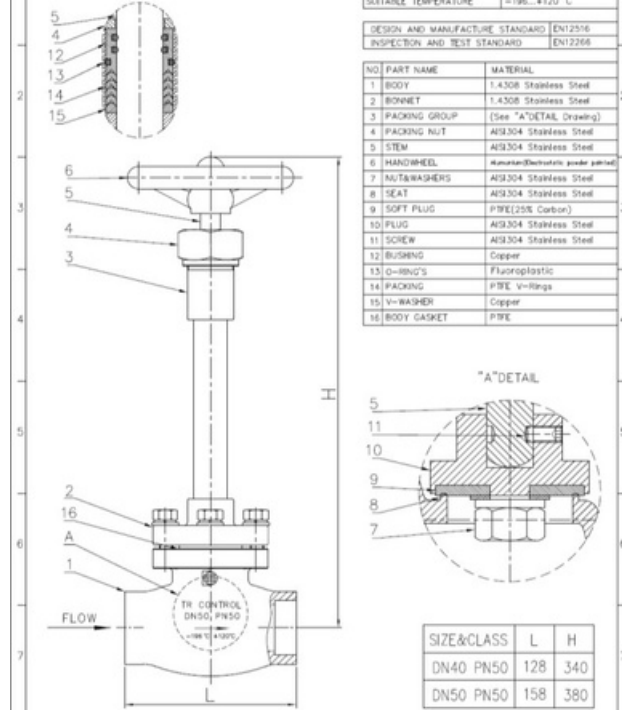


Globe Control Valves for Oxygen lines



- Pneumatic or Electric Actuated
- Proportional or On-off
- Body material SS304 or SS316
- Trim material Monel or Stainless steel
- Design temperature -196°C to 120°C
- Nominal Diameter DN15...DN500
- Nominal Pressure PN16...PN630





Cryogenic Valves for Liquid Gaslines

- Pneumatic or Electric Actuated
- Proportional or On-off
- Body material SS304
- Design temperature -196°C to 120°C
- Nominal Diameter DN15...DN100
- Nominal Pressure PN16...PN50